



Carriere^{LX}[®]

The Passive Self-Ligating Bracket System

An Open and Shut Case for Performance and Comfort



The *Carriere LX*[®] Self-Ligating Bracket takes clinical performance and patient outcomes to a new level.

The *Carriere LX* Self-Ligating Bracket is one of the fastest growing Self-Ligating Brackets (SLB) on the market today. It is specifically designed to meet your goal of low friction and low force by providing a “freedom of fit” in the bracket and archwire interface:

- In the body of the bracket, the mesial and distal edges of the slot have been carefully rounded for free sliding.
- The bracket archwire interface has a passive four-wall design that with low super-elastic archwires, provides a free-but controlled – synergistic action.

The “passive” orthodontic treatment philosophy can be “activated” when there is interest in using more force by using larger rectangular archwires.

The *Carriere LX* Self-Ligating Bracket System features a simple locking mechanism located in the bracket face, which can be easily opened with an explorer and closed with the touch of finger – offering quick, easy archwire changes.

The familiar rhomboid shape allows you to keep your preferred treatment techniques.

The *Carriere LX* Self-Ligating Bracket System is available in .018 and .022 McLaughlin, Bennett and Trevisi* and .018 and .022 Roth* prescriptions, available with or without hooks.

* Ortho Organizers prescription does not imply endorsement by the doctors.

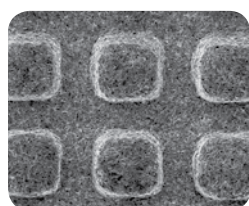
Proprietary improvements for a stronger, easier and greater performance

Only *Carriere LX* Self-Ligating Bracket from Ortho Organizers will provide you with the following:

- Micro-etched surface for increased bond strength (Figure 1)
- Lowest profile and less bulk in comparison to Damon 2 & 3[™] and In-Ovation-R[®](Figure 2)
- Color-coded brackets for easier identification
- Nickel free for increased biocompatibility and acceptance
- Wire Director and Opener tool - facilitates easier archwire placement and assists with opening and closing of the gate, REF 201-504W (Figure 3)

Figure 1 -

Micro-Etched Surface



100x SEM

Figure 2 - SLB Profile Comparison

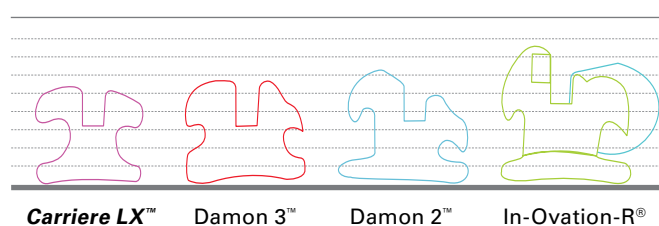
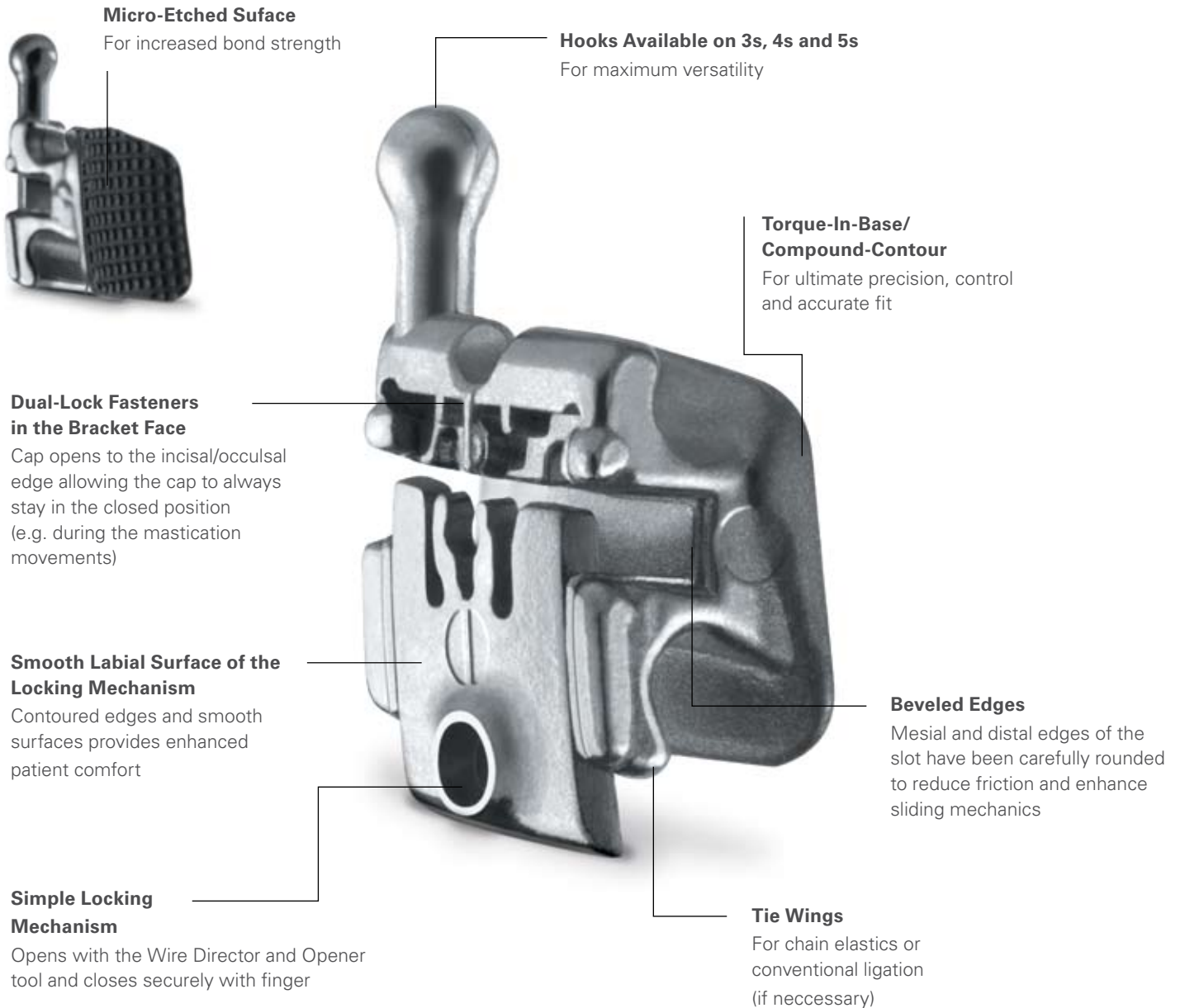


Figure 3 - *Carriere LX*

Wire Director and Opener Tool





A Simplified Clinical Procedure

1. Opening Locking Mechanism



Place tip of Wire Director and Opener (or instrument such as an explorer) in opening and apply light incisal/occlusal pressure.

2. Seating of the Archwire



Use the forked end of a Wire Director and Opener to help seat wire.
Fully engage wire before closing the locking mechanism.

3. Closing Locking Mechanism



Close the locking mechanism by pressing the locking mechanism gingivally with your finger.

| Carriere LX Self-Ligating Bracket Recommended Archwire Sequences | | |
|--|--------------|--------------|
| .022 | Upper | Lower |
| Initial | | |
| .014 Dimpled Bio-Kinetix™ Thermally Activated Nitanium® Archwire* | 100-852DM | 100-853DM |
| .016 Dimpled Bio-Kinetix™ Thermally Activated Nitanium® Archwire* | 100-854DM | 100-855DM |
| OR | | |
| .012 Dimpled Super Elastic Nitanium® Black-Ti™ Archwire* | 101-901 | 101-902 |
| .014 Dimpled Super Elastic Nitanium® Black-Ti™ Archwire* | 101-903 | 101-904 |
| Intermediate | | |
| .014 x .025 Dimpled Bio-Kinetix™ Thermally Activated Nitanium® Archwire* | 100-872DM | 100-873DM |
| .016 x .025 Dimpled Bio-Kinetix™ Thermally Activated Nitanium® Archwire* | 100-874DM | 100-875DM |
| .018 x .025 Dimpled Bio-Kinetix™ Thermally Activated Nitanium® Archwire* | 100-866DM | 100-867DM |
| Finishing | | |
| .017 x .025 CNA™ ProForm™ Archwire** | 100-945 | 100-955 |
| .019 x .025 CNA™ ProForm™ Archwire** | 100-948 | 100-958 |
| .018 | Upper | Lower |
| Initial | | |
| .014 Dimpled Bio-Kinetix™ Thermally Activated Nitanium® Archwire* | 100-852DM | 100-853DM |
| Intermediate | | |
| .014 x .025 Dimpled Bio-Kinetix™ Thermally Activated Nitanium® Archwire* | 100-872DM | 100-873DM |
| .016 x .025 Dimpled Bio-Kinetix™ Thermally Activated Nitanium® Archwire* | 100-874DM | 100-875DM |
| Finishing | | |
| .016 x .022 CNA™ ProForm™ Archwire** | 100-944 | 100-954 |
| .017 x .025 CNA™ ProForm™ Archwire** | 100-945 | 100-955 |

* 10 per pack of listed archwires ** 5 per pack of listed archwires



The *Carriere LX* Self-Ligating Bracket System provides rapid treatment time, fewer appointments for your practice and increased comfort for your patients.

Step up to the next level of performance and comfort today.

For more information on our products and educational offerings, please contact us:

In the U.S.: 800.547.2000

Outside the U.S.: +1.760.448.8600

Canada: CERUM 800.661.9567

To fax an order: 800.888.7244

To email an order: USASales@OrthoOrganizers.com



ORTHO™
Organizers

1822 Aston Avenue
Carlsbad, CA 92008
USA

www.OrthoOrganizers.com