

# NeoLucent® Plus™

Ceramic Bracket System

**NEXT  
GENERATION!**

- *Crunch COAT™* Base for Consistent Bonding
- Compatible with *Maestro®* Brackets



# NeoLucent Plus Ceramic Bracket System

The *NeoLucent Plus* Low-Profile Ceramic Bracket System delivers superb aesthetics by blending with the natural tooth tone for a virtually invisible appearance. With improved performance due to a *Crunch COAT* Base, more anatomically contoured base radii, and improved materials for a smoother finish and color consistency, *NeoLucent Plus* Ceramic Brackets provide the definitive performance you demand.

A U.S. manufacturer, *Ortho Organizers*® is dedicated to providing world class products and solutions to meet your every orthodontic need. As a full-service partner, we offer the tools to help expand your practice and diversify treatment options. So when your patients desire a cosmetic alternative, we have the right choice for you, and them.

## Patient Satisfaction

**Invisible Appearance –**  
Crafted to the highest aesthetic standards

Translucent, natural appearance from 99.9% pure Polycrystalline Alumina

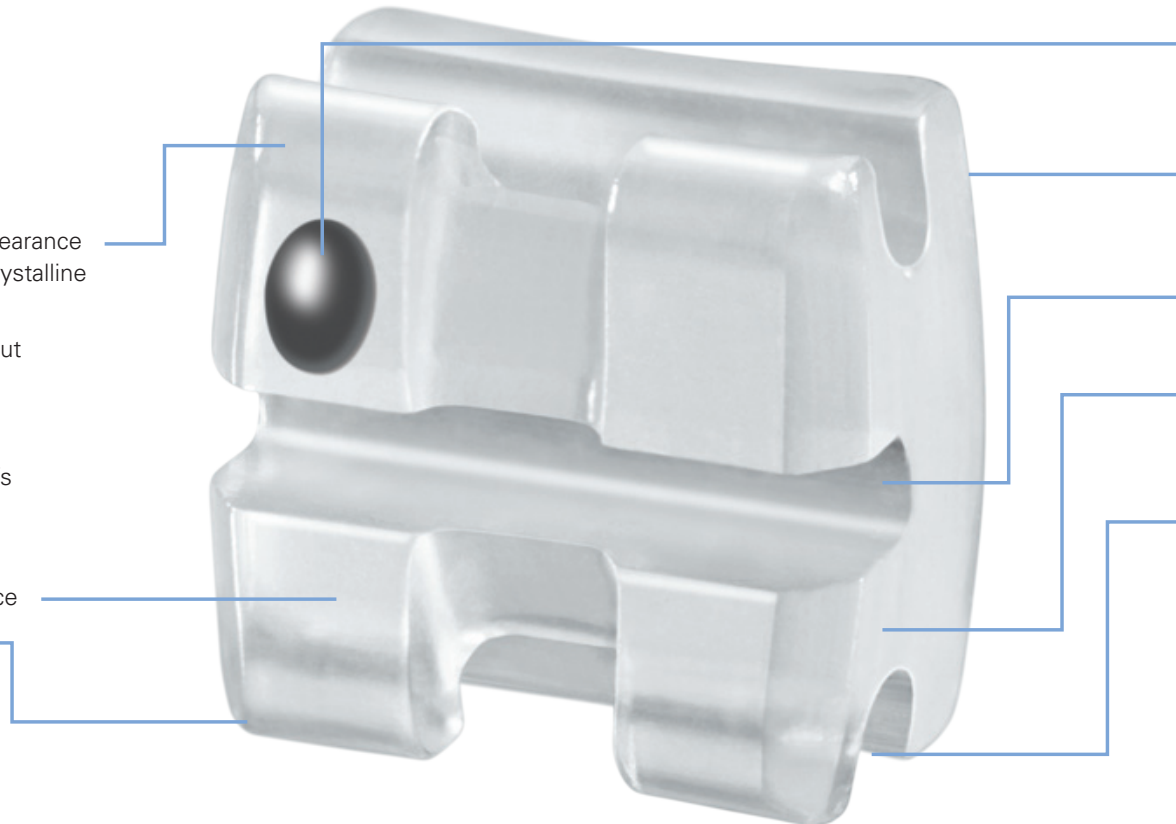
Stain resistant throughout treatment

**Comfort –**  
Designed with your patient's comfort in mind

Low profile

Smooth, polished surface

Rounded corners



## What's in the Plus?

### **Crunch COAT Base**

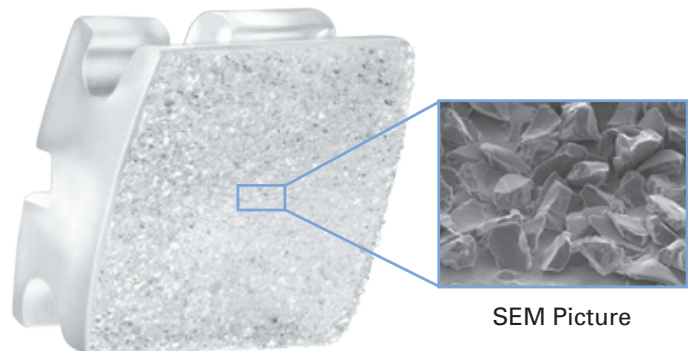
Base surface is proprietary to *Ortho Organizers*

#### **Bond Strength Comparable to Mesh Pad**

Fine alumina particles bonded to the bracket base provide a large surface area for adhesive bonding

#### **Consistent Debonding**

Because debonding occurs near the *Crunch COAT* adhesive interface, there is minimal distress to the enamel surface



SEM Picture

## Clinical Performance

Accurate placement achieved with an easily removable color-coded ID mark

Strong bonding and predictable debonding with a **Crunch COAT Base**

Superior Sliding Mechanics via a precision-cut archwire slot

Non-allergenic for sensitive patients as brackets do not contain nickel, chromium or other metals

Easy Ligation with ample tie wing clearance

Routine Protocol with no special instruments or adhesives required

## Finishing Touches

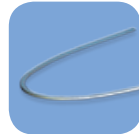
To ensure excellence in every one of your cases, we offer an extensive line of aesthetic auxiliaries compatible with the *NeoLucent Plus* Ceramic Bracket System.

### Aesthetic Archwire Options



#### Tooth Tone Plastic-Coated Archwires

Stain and crack resistant this archwire features a tooth-colored coating that blends with natural dentition and reduces friction.



#### White Micro-Coated Bio-Kinetix™ Thermally Activated Nitanium® Archwires

The labial side of the wire is coated in bright white to enhance aesthetics, without affecting wire dimensions.



#### Pearl Tone® Preformed Ligature Wires

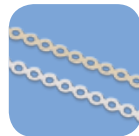
Available in a white/pearl hue, this archwire features a super smooth nonstick coating.

### Aesthetic Elastomeric Options



#### Safe-T-Tie™ Ligatures

Ligatures for individual patient use, avoiding cross-contamination. We offer an array of color options that blend with the bracket and dentition. Available in clear, white, tooth tone, natural glow and smoke.



#### Chain Elastic

Made from super-elastic long lasting material, these ligatures deliver gentle, continuous force for more predictable tooth movement. Multiple colors to choose from: clear, white, tooth tone, natural glow and smoke.



#### Light Force Chain Elastic

Delivers a 20% lighter force than our regular chain making it an excellent choice for low force treatment mechanics. Available in clear.

## Single Hook

More Comfort for the Patient – less bulky than universal hooks



## Compatible IN/OUT with *Maestro* Low-Profile Bracket System

For aesthetic anterior and metal posterior bracketing



NeoLucent Plus Bracket



Maestro Bracket

# Orthodontic Instruments



## Triumph™ Debonding Pliers

Safely and easily removes steel, ceramic, and plastic direct bond brackets and remaining adhesive from the tooth surface. Catalog No. 205-219



## Triumph Angulated Debonding Pliers

The angulated design quickly and easily removes anterior and posterior direct bond brackets. Catalog No. 205-220XL

## NeoLucent Plus Ceramic Brackets

All Sets\*





Rx	DESCRIPTION	QTY OF SETS	TOTAL BRACKETS	ITEM NUMBERS	
				.018	.022
Roth	U/L 5x5 kit with hooks on 3's, 4's, 5's	1	20	704-299	704-399
	U/L 5x5 kit with hooks on 3's, 4's, 5's, quick pac	1	20	704-299Q	704-399Q
	U/L 5x5 kit with hooks on 3's, 4's, 5's	5	100	704-299-5	704-399-5
	U/L 5x5 kit with hooks on 3's, 4's, 5's	10	200	704-299-10	704-399-10
	U 5x5 kit with hooks on 3's, 4's, 5's	1	10	704-299U	704-399U
	U/L 3x3 kit with hooks on 3's	1	12	704-296	704-396
	U 3x3 kit with hooks on 3's	1	6	704-296U	704-396U
McLaughlin, Bennett, and Trevisi	U/L 5x5 kit with hooks on 3's, 4's, 5's	1	20	704-299MC	704-399MC
	U/L 5x5 kit with hooks on 3's, 4's, 5's, quick pac	1	20	704-299MCQ	704-399MCQ
	U/L 5x5 kit with hooks on 3's, 4's, 5's	5	100	704-299MC-5	704-399MC-5
	U/L 5x5 kit with hooks on 3's, 4's, 5's	10	200	704-299MC-10	704-399MC-10
	U 5x5 kit with hooks on 3's, 4's, 5's	1	10	704-299MCU	704-399MCU
	U/L 3x3 kit with hooks on 3's	1	12	704-296MC	704-396MC
	U 3x3 kit with hooks on 3's	1	6	704-296MCU	704-396MCU

## NeoLucent Plus Ceramic Brackets




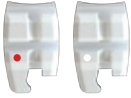
Summary Table – All Prescriptions\*

MAXILLARY	CENTRALS		ANTI-ROTATION	LATERALS		ANTI-ROTATION	CUSPIDS		ANTI-ROTATION	1ST BICUSPIDS		ANTI-ROTATION	2ND BICUSPIDS		ANTI-ROTATION
	TORQUE	ANG.		TORQUE	ANG.		TORQUE	ANG.		TORQUE	ANG.		TORQUE	ANG.	
Roth	+12°	+5°	0°	+8°	+9°	0°	-2°	+13°	4°M	-7°	0°	2°D	-7°	0°	2°D
McLaughlin, Bennett, and Trevisi	+17°	+4°	0°	+10°	+8°	0°	-7°	+8°	0°	-7°	0°	0°	-7°	0°	0°
MANDIBULAR	TORQUE	ANG.	ANTI-ROTATION	TORQUE	ANG.	ANTI-ROTATION	TORQUE	ANG.	ANTI-ROTATION	TORQUE	ANG.	ANTI-ROTATION	TORQUE	ANG.	ANTI-ROTATION
Roth	-1°	0°	0°	-1°	0°	0°	-11°	+7°	2°M	-17°	0°	4°D	-22°	0°	4°D
McLaughlin, Bennett, and Trevisi	-6°	0°	0°	-6°	0°	0°	-6°	+3°	0°	-12°	2°	0°	-17°	2°	0°

## NeoLucent Plus Ceramic Brackets All Prescriptions\*







MAXILLARY	DESC.	COLOR-CODE	TOOTH #	TORQUE	ANG.	ANTI-ROTATION	ITEM NUMBERS				
							.018 R	.018 L	.022 R	.022 L	
Centrals		-	Black	U1	+12°	+5°	0°	704-203	704-204	704-303	704-304
		-	Black	U1	+17°	+4°	0°	704-205	704-206	704-305	704-306
Laterals		-	Pink	U2	+8°	+9°	0°	704-221	704-222	704-321	704-322
		-	Pink	U2	+10°	+8°	0°	704-223	704-224	704-323	704-324
Cuspids		Hook	Green	U3	-2°	+13°	4°M	704-251HK	704-252HK	704-351HK	704-352HK
		Hook	Green	U3	-7°	+8°	0°	704-255HK	704-256HK	704-355HK	704-356HK
Bicuspids		Hook	Purple	U4&5's	-7°	0°	2°D	704-259HK	704-260HK	704-359HK	704-360HK
		Hook	Purple	U4&5's	-7°	0°	0°	704-257HK	704-258HK	704-357HK	704-358HK

## NeoLucent Plus Ceramic Brackets All Prescriptions\*

MANDIBULAR	DESC.	COLOR-CODE	TOOTH #	TORQUE	ANG.	ANTI-ROTATION	ITEM NUMBERS				
							.018 R	.018 L	.022 R	.022 L	
Anteriors		-	Yellow	L1&2's	-1°	0°	0°	704-233	704-233	704-333	704-333
		-	Yellow	L1&2's	-6°	0°	0°	704-235	704-235	704-335	704-335
Cuspids		Hook	Blue	L3	-11°	+7°	2°M	704-269HK	704-270HK	704-369HK	704-370HK
		Hook	Blue	L3	-6°	+3°	0°	704-271HK	704-272HK	704-371HK	704-372HK
1st Bicuspids		Hook	White	L4	-17°	0°	4°D	704-289HK	704-290HK	704-389HK	704-390HK
		Hook	Gray	L4	-12°	2°	0°	704-287HK	704-288HK	704-387HK	704-388HK
2nd Bicuspids		Hook	Red	L5	-22°	0°	4°D	704-293HK	704-294HK	704-393HK	704-394HK
		Hook	White	L5	-17°	2°	0°	704-291HK	704-292HK	704-391HK	704-392HK

# NeoLucent Plus Ceramic Brackets

## Roth Prescriptions\*

MAXILLARY		DESC.	COLOR-CODE	TOOTH #	TORQUE	ANG.	ANTI-ROTATION	ITEM NUMBERS			
								.018 R	.018 L	.022 R	.022 L
Centrals		-	Black	U1	+12°	+5°	0°	704-203	704-204	704-303	704-304
Laterals		-	Pink	U2	+8°	+9°	0°	704-221	704-222	704-321	704-322
Cuspids		Hook	Green	U3	-2°	+13°	4°M	704-251HK	704-252HK	704-351HK	704-352HK
Bicuspids		Hook	Purple	U4&5's	-7°	0°	2°D	704-259HK	704-260HK	704-359HK	704-360HK
MANDIBULAR		DESC.	COLOR-CODE	TOOTH #	TORQUE	ANG.	ANTI-ROTATION	ITEM NUMBERS			
								.018 R	.018 L	.022 R	.022 L
Anteriors		-	Yellow	L1&2's	-1°	0°	0°	704-233	704-233	704-333	704-333
Cuspids		Hook	Blue	L3	-11°	+7°	2°M	704-269HK	704-270HK	704-369HK	704-370HK
1st Bicuspids		Hook	White	L4	-17°	0°	4°D	704-289HK	704-290HK	704-389HK	704-390HK
2nd Bicuspids		Hook	Red	L5	-22°	0°	4°D	704-293HK	704-294HK	704-393HK	704-394HK

# NeoLucent Plus Ceramic Brackets

## McLaughlin, Bennett, and Trevisi Prescriptions\*

MAXILLARY	DESC.	COLOR-CODE	TOOTH #	TORQUE	ANG.	ANTI-ROTATION	ITEM NUMBERS			
							.018 R	.018 L	.022 R	.022 L
Centrals	-	Black	U1	+17°	+4°	0°	704-205	704-206	704-305	704-306
Laterals	-	Pink	U2	+10°	+8°	0°	704-223	704-224	704-323	704-324
Cuspids	Hook	Green	U3	-7°	+8°	0°	704-255HK	704-256HK	704-355HK	704-356HK
Bicuspids	Hook	Purple	U4&5's	-7°	0°	0°	704-257HK	704-258HK	704-357HK	704-358HK

MANDIBULAR	DESC.	COLOR-CODE	TOOTH #	TORQUE	ANG.	ANTI-ROTATION	ITEM NUMBERS			
							.018 R	.018 L	.022 R	.022 L
Anteriors	-	Yellow	L1&2's	-6°	0°	0°	704-235	704-235	704-335	704-335
Cuspids	Hook	Blue	L3	-6°	+3°	0°	704-271HK	704-272HK	704-371HK	704-372HK
1st Bicuspids	Hook	Gray	L4	-12°	+2°	0°	704-287HK	704-288HK	704-387HK	704-388HK
2nd Bicuspids	Hook	White	L5	-17°	+2°	0°	704-291HK	704-292HK	704-391HK	704-392HK

## NeoLucent Plus Ceramic Brackets

### Color-Code ID Chart

#### MAXILLARY

U1: BLACK - DISTAL-GINGIVAL TIE WING  
 U2: PINK - DISTAL-GINGIVAL TIE WING  
 U3: GREEN - DISTAL-GINGIVAL TIE WING  
 U4 & 5: PURPLE - DISTAL-GINGIVAL TIE WING

#### MANDIBULAR

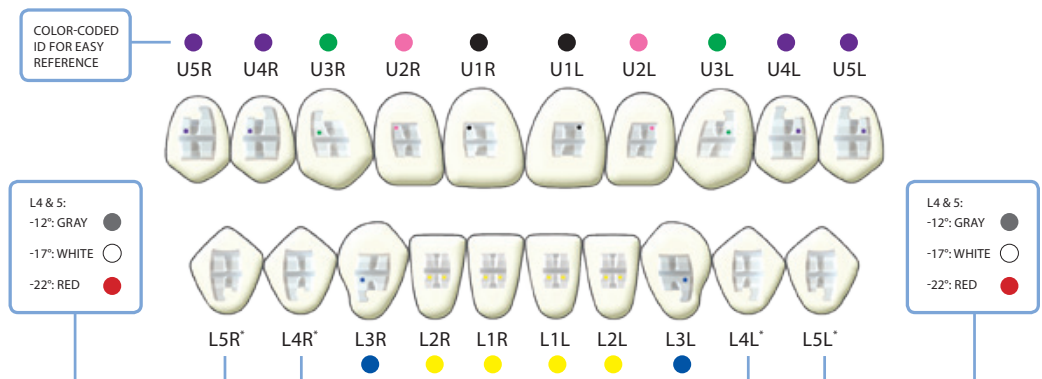
L1 & 2: YELLOW - GINGIVAL TIE WINGS = UNIVERSAL  
 L3: BLUE - DISTAL-GINGIVAL TIE WING  
 L4 & 5: SEE ABOVE

#### ROTH

LOWER 4'S: WHITE  
 LOWER 5'S: RED

#### MCLAUGHLIN, BENNETT, AND TREVISI

LOWER 4'S: GRAY  
 LOWER 5'S: WHITE





Subscribe to our eNews: [www.OrthoOrganizers.com/eNews](http://www.OrthoOrganizers.com/eNews)

For more information on our products, orthodontic laboratory services, and educational offerings, please contact us:

Customer Service: 888.851.0533

In the U.S.: 800.547.2000

Outside the U.S.: +(1) 760 448 8600

Canada: CERUM 800.661.9567

To fax an order: 800.888.7244

To fax an order outside the U.S.: +(1) 760 448 8607

To email an order: [USASales@OrthoOrganizers.com](mailto:USASales@OrthoOrganizers.com)

To email an order outside the U.S.: [IntlOrders@OrthoOrganizers.com](mailto:IntlOrders@OrthoOrganizers.com)



**ORTHO**<sup>®</sup>  
Organizers

A  HENRY SCHEIN<sup>®</sup> COMPANY

1822 Aston Avenue  
Carlsbad, CA 92008  
USA  
[OrthoOrganizers.com](http://OrthoOrganizers.com)